



**DESIGN & CONSTRUCTION GROUP
THE GOVERNOR NELSON A. ROCKEFELLER
EMPIRE STATE PLAZA
ALBANY, NY 12242**

ADDENDUM NO. 3 TO PROJECT NO. 47295

**CONSTRUCTION WORK
PROVIDE MASONRY REPAIR, PHASE 2
STATE ARMORY
2366 5TH AVENUE
NEW YORK, NY**

April 23, 2024

NOTE: This Addendum forms a part of the Contract Documents. Insert it in the Project Manual.
Acknowledge receipt of this Addendum in the space provided on the Bid Form.

DRAWINGS

1. Revised Drawings
 - a. Drawing Nos. G-005, G-006 and A-578, noted "ADDENDUM # 3 4/16/2024" accompany this Addendum and supersede the same numbered originally issued drawings.

END OF ADDENDUM

Brady Sherlock, P.E.
Director, Division of Design
Design & Construction

RESTORATION SUMMARY

ADMINISTRATION BUILDING

Table with columns: ITEM, SPECIFICATION REFERENCE, DETAIL CODE, DESCRIPTION, UNIT, DWG. Rows include categories A (REMOVAL), B (CLEANING), C (CONCRETE), D (MASONRY), E (LINTELS), F (JOINT SEALANTS), G (DOORS, WINDOWS & LOUVERS), H (STEEL COATINGS), and I (RAILING).

NOTE: ALL ALTERNATE ITEMS ARE LISTED ON THE FOLLOWING SHEET.

DRILL HALL

Table with columns: ITEM, SPECIFICATION REFERENCE, DETAIL CODE, DESCRIPTION, UNIT, DWG. Rows include categories A (CLEANING), B (CONCRETE), C (MASONRY), D (LINTELS), E (JOINT SEALANTS), F (DOORS & WINDOWS), and G (STEEL COATINGS).

The noted designation of units are: SF: Square Foot, SI: Square Inch, LF: Linear Foot, LI: Linear Inches, EA: Each

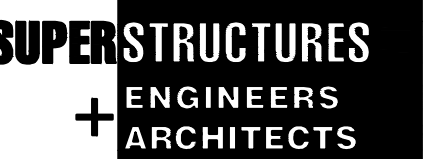
RESTORATION CODE ABBREVIATIONS

- CLN - CLEANING, COA - COATING, CON - CONCRETE, COP - COPING, COR - CORNER, DEM - DEMOLITION/ REMOVAL, DOR - DOOR, FLA - FLASHING, GAT - GATE, GLA - GLAZING, GRL - WINDOW GRILLE, JNT - JOINT, LTL - LINTEL, MAS - MASONRY, PEN - PENETRATION, PIR - PIER, PNT - POINTING, RAI - RAILING, SCR - WINDOW SCREEN, STR - STAIRS, TRC - TERRA COTTA, PNT - POINTING, RAI - RAILING, SCR - WINDOW SCREEN, STR - STAIRS, TRC - TERRA COTTA, SHM - SHEET METAL, SIL - SILL, SPN - SPANDREL, STL - STEEL, STN - STONE



DESIGN & CONSTRUCTION

CONSULTANT CERTIFICATE OF AUTHORIZATION #: 0006552



14 WALL ST NEW YORK, NY

Environmental Sub-consultants: WATTS Architecture & Engineering Estimate Sub-consultants: Singleton Construction Consultants

UNIFORM CODE STATEMENT: TO THE BEST OF THE REGISTERED DESIGN PROFESSIONAL'S KNOWLEDGE, BELIEF, AND PROFESSIONAL JUDGEMENT, THESE PLANS AND/OR SPECIFICATIONS ARE IN COMPLIANCE WITH THE 2020 UNIFORM CODE.

WARNING: THE ALTERATION OF THIS MATERIAL IN ANY WAY, UNLESS DONE UNDER THE DIRECTION OF A COMPARABLE PROFESSIONAL, I.E. ARCHITECT FOR AN ARCHITECT, ENGINEER FOR AN ENGINEER OR LANDSCAPE ARCHITECT FOR A LANDSCAPE ARCHITECT, IS A VIOLATION OF THE NEW YORK STATE EDUCATION LAW AND/OR REGULATIONS AND IS A CLASS 'A' MISDEMEANOR.



REGISTRATION EXPIRES: 02/28/2026

CONSTRUCTION

TITLE: PROVIDE MASONRY REPAIRS PHASE 2

LOCATION: STATE ARMORY 2366 5TH AVENUE NEW YORK, NEW YORK

CLIENT: DIVISION OF MILITARY AND NAVAL AFFAIRS

Table with columns: MARK, DATE, DESCRIPTION. Includes dates 04/16/2024 and 02/27/2024.

PROJECT NUMBER: 47295 - C DESIGNED BY: NK/KH DRAWN BY: AB/HB/MZ/MEK/WY/LY/OG FIELD CHECK: APPROVED: SHEET TITLE: RESTORATION SUMMARY

DRAWING NUMBER: G-005 SHEET 5 OF 133

RESTORATION SUMMARY (cont.)

ASSUMED QUANTITIES - ADMINISTRATION BUILDING - UNDER EPDM MEMBRANE ONLY						
ITEM	SPECIFICATION REFERENCE	DETAIL CODE	DESCRIPTION	QTY	UNIT	DWG
A			CONCRETE			
01	030131	CON 01	SPALLED CONCRETE REPAIR	4	SF	A-510
B			MASONRY			
01	040130	COP 01	TERRA COTTA COPING UNIT REPLACEMENT - ADMIN BUILDING	57	EA	A-401 TO A-403
02	042113	MAS 01	CRACKED BRICK REPAIR	194	LF	A-558
03	042113	MAS 03	SPALLED BRICKS REPLACEMENT	287	SF	A-559
04	040513	PNT 01	REPOINTING: BRICK MORTAR JOINTS	92	SF	A-566
05	040130	TRC 01	TERRA COTTA SPALL REPAIR	10,820	SI	A-581
06	040130	TRC 02	TERRA COTTA CRACK REPAIR	6,040	LI	A-582
07	042129	TRC 03	TERRA COTTA DECORATIVE PANEL REPLACEMENT	7	EA	A-583 TO A-584

ASSUMED QUANTITIES - DRILL HALL - SCREEN AND GRILLE ANCHORING ONLY						
ITEM	SPECIFICATION REFERENCE	DETAIL CODE	DESCRIPTION	QTY	UNIT	DWG
A			MASONRY			
01	042113	MAS 03	SPALLED BRICKS REPLACEMENT	165	SF	A-559

Quantities above are assumed per conditions for unforeseen conditions, including but not limited to, masonry crack/ spall repairs, terra cotta crack/ spall repairs, mortar joint repointing, and terra cotta replacement. After Contractor completes work per detail DEM01, Contractor shall perform Confirmation Surveys to verify Quantities per conditions observed. The Confirmation Survey shall include, but not be limited to, location of condition, type of repair, condition quantity, and photo documentation for review by Director's Representative.

As mentioned above assumed quantities are ONLY for unforeseen conditions under the EPDM membrane at the Administration Building. These assumed quantities are NOT the total quantities for the project instead for the Contractor to reference for bidding purposes due to the area covered by EPDM.

The assumed quantities listed on this sheet are the sum total of assumed quantities indicated on the elevations, plans, enlarged elevations, and enlarged plans within the contract drawings (ranging from, but not limited to, Sheets A-104 to A-403). The assumed quantities are an addition to the non-assumed quantities indicated on all the plans and elevations within the contract drawings. Any assumed quantity is noted as "assumed". Contractor shall retrieve the non-assumed quantities using the plans and elevations provided within the contract drawings.

The noted designation of units are:

- SF: Square Foot
- SI: Square Inch
- LF: Linear Foot
- LI: Linear Inches
- EA: Each

BID ALTERNATE #1						
ITEM	SPECIFICATION REFERENCE	DETAIL CODE	DESCRIPTION	QTY	UNIT	DWG
A			REMOVAL			
01	024119	DEM 01	EPDM REMOVAL: MASONRY WALLS, PARAPETS & COPINGS		SF	AD-501
02	024119	DEM 02	CHIMNEY DEMOLITION AND NEW PARAPET COPING		EA	AD-502
03	024119	DEM 03	PARTIAL CHIMNEY DEMOLITION AND NEW TERRA COTTA COPINGS		EA	AD-503
B			CLEANING			
01	040123	CLN 01	CLEANING - BRICK MASONRY		SF	A-504
02	040123	CLN 04	CLEANING - TERRA COTTA COPING AND PANELS		SF	A-505
03	040123	CLN 06	POST CONSTRUCTION POWER WASH		SF	A-507
B			MASONRY			
01	042129	COP 01	TERRA COTTA COPING UNIT REPLACEMENT		EA	A-513 TO A-519
02	042113	COR 01	CORNER RECONSTRUCTION: BRICK MASONRY AT OUTSIDE CORNER		LF	A-521
03	042113	MAS 01	CRACKED BRICK REPAIR		LF	A-558
04	042113	MAS 02	INDIVIDUAL BRICK REPLACEMENT		EA	A-559
05	042113	MAS 03	SPALLED BRICK REPLACEMENT		SF	A-559
06	040513	PNT 01	REPOINTING: BRICK MORTAR JOINTS		SF	A-566
07	040513	PNT 04	REPOINTING TERRA COTTA MORTAR JOINTS		EA	A-567
08	044301	SIL 01	BLUESTONE SILL REPLACEMENT AT MECHANICAL PENTHOUSE		LF	A-570
09	042113	SPN 01	ROOF LEVEL SPANDREL RESTORATION: BRICK MASONRY - ADMIN. BUILDING		LF	A-573
10	040130	TRC 01	TERRA COTTA SPALL REPAIR		SI	A-581
11	040130	TRC 02	TERRA COTTA CRACK REPAIR		LI	A-582
C			STEEL COATINGS			
01	099101	COA 03	COAT EXISTING EXPOSED STEEL		LF	A-508
02	099101	SCR 01	WINDOW SECURITY SCREEN REFURBISH, COATING, & REINSTALL		EA	A-569
D			JOINT SEALANTS			
01	079200	JNT 01	JOINT SEALANT REPLACEMENT AT OPENING PERIMETERS AT ADMIN BLDG		LF	A-530 TO A-532
02	079200	JNT 02	WEATHER CAP REPLACEMENT: COPING CROSS-JOINTS		LF	A-532
03	079200	PEN 01	SEAL THRU - WALL PENETRATION RESTORATION		EA	A-563
E			LINTELS			
01	051200	LTL 02A	STEEL LINTEL REPLACEMENT AT ADMIN. BLDG.: MECHANICAL PENTHOUSE (NO WINDOWS)		LF	A-539
02	051200	LTL 04B	STEEL LINTEL REPLACEMENT AT ADMIN. BLDG.: 3-OPENINGS BETWEEN BRICK PIERS AT BAY 3		LF	A-543
03	051200	LTL 05	STEEL LINTEL REPLACEMENT AT ADMIN. BLDG.: SINGLE OPENING BETWEEN BRICK PIERS AT BAYS 1, 2, & 5		LF	A-546
04	051200	LTL 08	STEEL LINTEL REPLACEMENT AT ADMIN. BLDG.: MASONRY OPENINGS AT MECHANICAL PENTHOUSE		LF	A-549

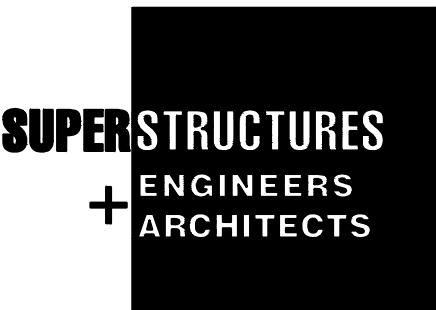
ASSUMED QUANTITIES - ALTERNATE #1 ONLY						
ITEM	SPECIFICATION REFERENCE	DETAIL CODE	DESCRIPTION	QTY	UNIT	DWG
A			MASONRY			
01	040130	COP 01	TERRA COTTA COPING UNIT REPLACEMENT - ADMIN BUILDING	10	EA	A-401 TO A-403
02	042113	MAS 03	SPALLED BRICKS REPLACEMENT	53	SF	A-559
03	040130	TRC 01	TERRA COTTA SPALL REPAIR	1,325	SI	A-581
04	040130	TRC 02	TERRA COTTA CRACK REPAIR	1,270	LI	A-582

TYP. MOCKUP DIMENSIONS			
DETAIL CODE/ PREFIX	DIMENSIONS/EXTENTS	REQ'D APPROVAL	BUILDING
CLN	3' x 3' surface area	YES	AB & DH
COA	18" long x full depth of steel member 2' x 2' area at Door	YES	AB & DH
CON	as directed by Architect	YES	DH
COP	whole unit	YES	AB & DH
GRL	whole unit	YES	AB & DH
JNT	3' long	YES	AB & DH
LTL	progress steps following each detail	YES	AB & DH
MAS	3' high x 4' long	YES	AB & DH
PNT	3' high x 4' long (for each mortar formulation and joint configuration)	YES	AB & DH
RAI	Typical assembly length at roof (see detail RAI 01)	YES	AB
SCR	whole unit	YES	AB & DH
SIL	whole unit	YES	AB & DH
SPN	4' long x height of detail	YES	AB & DH
STN	3' high x 4' long	YES	AB
STR	3' x 3' surface area	YES	DH
TRC	as directed by Architect for repairs whole unit for replacement	YES	AB & DH

Contractor shall provide Mockup locations to be reviewed by the Director's Representative. See specification section 014339 Mockup Requirements and specification sections listed in the detail list on sheet G-005 for further information. Contractor shall coordinate with the Director's Representative to select which individual Mockups shall be integrated into one "Master" Mockup.

BID ALTERNATE #2						
ITEM	SPECIFICATION REFERENCE	DETAIL CODE	DESCRIPTION	QTY	UNIT	DWG
A			CLEANING			
01	040123	CLN 05	CLEANING - TERRA COTTA UNITS		SF	A-506
B			MASONRY			
01	040513	PNT 04	REPOINTING TERRA COTTA MORTAR JOINTS		LF	A-567
02	042129	TRC 04	TERRA COTTA UNIT REPLACEMENT - DRILL HALL		EA	A-585 TO A-587
03	042129	TRC 05	TERRA COTTA CANOPY RECONSTRUCTION SOUTH - (TOP LEVEL)		EA	A-589 TO A-591
04	042129	TRC 06	TERRA COTTA CANOPY RECONSTRUCTION NORTH - (TOP LEVEL)		EA	A-592 TO A-594
C			STEEL REINFORCEMENT			
01	051200	STL 02	STEEL BEAM REINFORCEMENT AT TERRA COTTA CANOPY		LF	A-589

CONSULTANT
CERTIFICATE OF AUTHORIZATION #: 0006552



14 WALL ST
NEW YORK, NY

Environmental Sub-consultants:
WATTS Architecture & Engineering
Estimate Sub-consultants:
Singleton Construction Consultants

ENERGY CODE WRITTEN STATEMENT:
TO THE BEST OF THE REGISTERED DESIGN PROFESSIONAL'S KNOWLEDGE, BELIEF, AND PROFESSIONAL JUDGEMENT, THE DRAWINGS, BEARING MY PROFESSIONAL SEAL AND SIGNATURE MEET OR EXCEED THE 2020 NEW YORK STATE ENERGY CODE CONSISTING OF THE 2018 INTERNATIONAL ENERGY CONSERVATION CODE, 2016 ASHRAE 90.1.

UNIFORM CODE STATEMENT:
TO THE BEST OF THE REGISTERED DESIGN PROFESSIONAL'S KNOWLEDGE, BELIEF AND PROFESSIONAL JUDGEMENT, THESE PLANS AND/OR SPECIFICATIONS ARE IN COMPLIANCE WITH THE 2020 UNIFORM CODE.

WARNING:
THE ALTERATION OF THIS MATERIAL IN ANY WAY, UNLESS DONE UNDER THE DIRECTION OF A COMPARABLE PROFESSIONAL, I.E. ARCHITECT FOR AN ARCHITECT, ENGINEER FOR AN ENGINEER OR LANDSCAPE ARCHITECT FOR A LANDSCAPE ARCHITECT, IS A VIOLATION OF THE NEW YORK STATE EDUCATION LAW AND/OR REGULATIONS AND IS A CLASS 'A' MISDEMEANOR.



REGISTRATION EXPIRES:
02/28/2026

CONSTRUCTION

TITLE:
PROVIDE MASONRY REPAIRS
PHASE 2

LOCATION:
STATE ARMORY
2366 5TH AVENUE
NEW YORK, NEW YORK

CLIENT:
DIVISION OF MILITARY
AND NAVAL AFFAIRS

MARK	DATE	DESCRIPTION
	04/16/2024	ADDENDUM #3
	02/27/2024	BID DOCUMENTS

PROJECT NUMBER: **47295 - C**
DESIGNED BY: NK/KH
DRAWN BY: AB/HB/MZ/MEK/VY/LY/OG
FIELD CHECK:
APPROVED:

SHEET TITLE:
RESTORATION SUMMARY (cont.)

DRAWING NUMBER:
G-006

ENERGY CODE WRITTEN STATEMENT:
TO THE BEST OF THE REGISTERED DESIGN PROFESSIONAL'S KNOWLEDGE, BELIEF, AND PROFESSIONAL JUDGEMENT, THE DRAWINGS, BEARING MY PROFESSIONAL SEAL AND SIGNATURE MEET OR EXCEED THE 2020 NEW YORK STATE ENERGY CODE CONSISTING OF THE 2018 INTERNATIONAL ENERGY CONSERVATION CODE, 2016 ASHRAE 90.1.

UNIFORM CODE STATEMENT:
TO THE BEST OF THE REGISTERED DESIGN PROFESSIONAL'S KNOWLEDGE, BELIEF AND PROFESSIONAL JUDGEMENT, THESE PLANS AND/OR SPECIFICATIONS ARE IN COMPLIANCE WITH THE 2020 UNIFORM CODE.

WARNING:
THE ALTERATION OF THIS MATERIAL IN ANY WAY, UNLESS DONE UNDER THE DIRECTION OF A COMPARABLE PROFESSIONAL, I.E. ARCHITECT FOR AN ARCHITECT, ENGINEER FOR AN ENGINEER OR LANDSCAPE ARCHITECT FOR A LANDSCAPE ARCHITECT, IS A VIOLATION OF THE NEW YORK STATE EDUCATION LAW AND/OR REGULATIONS AND IS A CLASS 'A' MISDEMEANOR.



REGISTRATION EXPIRES:
02/28/2026

CONTRACT: **CONSTRUCTION**

TITLE: **PROVIDE MASONRY REPAIRS PHASE 2**

LOCATION: **STATE ARMORY
2366 5TH AVENUE
NEW YORK, NEW YORK**

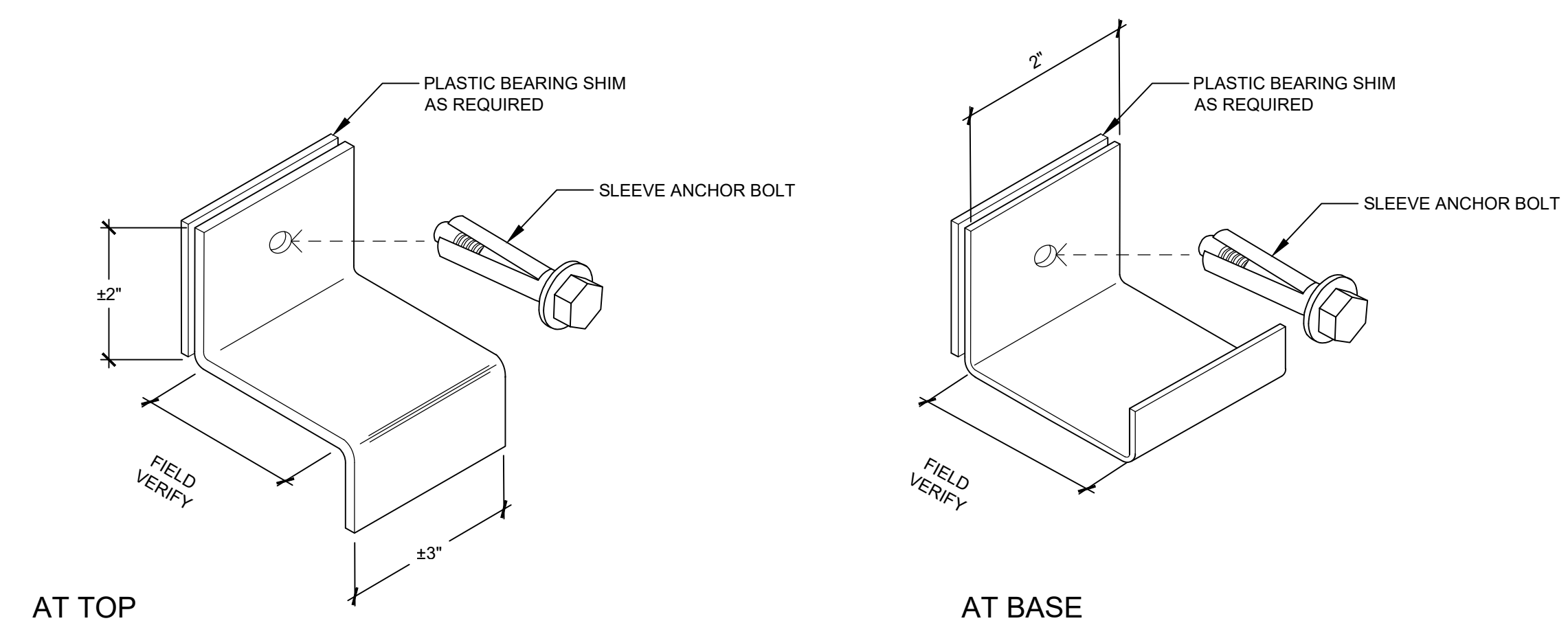
CLIENT: **DIVISION OF MILITARY
AND NAVAL AFFAIRS**

MARK	DATE	DESCRIPTION
Δ	04/16/2024	ADDENDUM #3
	02/27/2024	BID DOCUMENTS

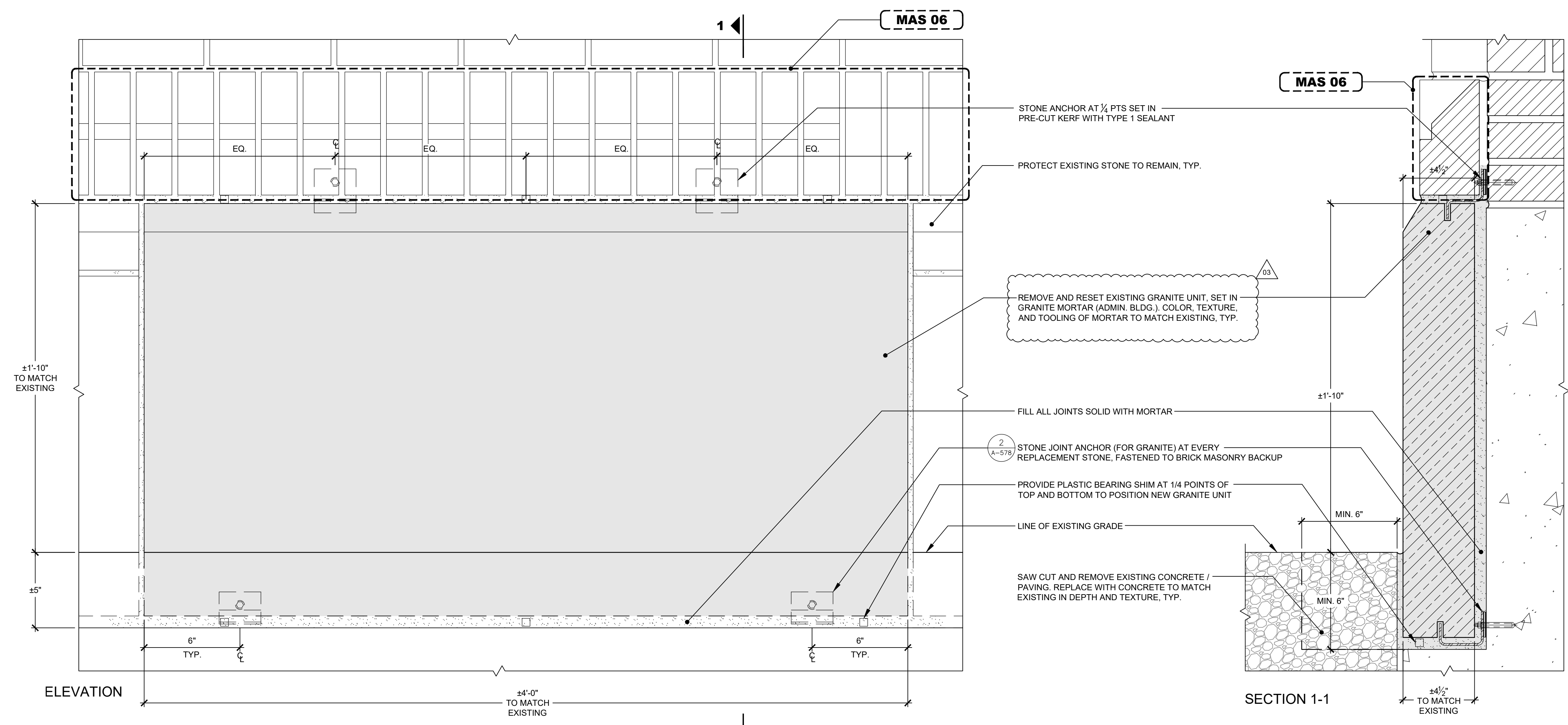
PROJECT NUMBER:	47295 - C
DESIGNED BY:	NK/KH
DRAWN BY:	AB/HB/MZ/MEK/VY/LY/OG
FIELD CHECK:	
APPROVED:	

SHEET TITLE:
**RESTORATION ASSEMBLY
DETAILS - STN 02A**

DRAWING NUMBER:
A-578



2 - STONE JOINT ANCHOR (FOR GRANITE) (NTS)



1 STN 02A: RESET GRANITE UNIT
3" = 1'-0"

Apr 16, 2024 - 2:21pm
L:\66006\6659RDZ (Fifth Avenue Armory)\rock\02 CONTRACT DOCUMENTS\Submissions (pdfs and dwg)\2024-04-01 Final Bid Documents from OGS\Addendum 03\A-578.dwg
36x24 PLOT SHEET